



## ENGINEERING SERVICES

PCB & PCBA  
SOFTWARE & HARDWARE  
MECHANICAL  
PROTOTYPE & TESTER



## ASSEMBLY SERVICES

SMT & THT PCBA  
CABLE & HARNESS  
ELECTROMECHANICAL  
FULL TURNKEY



## AFTERMARKET SERVICES

CLEAN, INSPECT & TEST  
TROUBLESHOOT  
REMANUFACTURE  
PLCM OPPORTUNITIES



# MATRIC GROUP

MATRIC | DYNAMIC MANUFACTURING | WINDURANCE

MANUFACTURING CAPABILITIES GUIDE

Version 4

# ABOUT US

**MATRIC GROUP** ..... 3

**DYNAMIC MANUFACTURING** ..... 4

**WINDURANCE** ..... 5

**ENGINEERING** ..... 6-7

Our team combines technical precision and creative innovation to tackle complex design challenges. Using advanced 3D modeling, rendering, and simulation tools, we efficiently turn ideas into fully realized products. Our PCB layout experts excel in electronic packaging and design, leveraging cutting-edge tools and expertise to deliver outstanding results.

**PCB ASSEMBLY** ..... 8

We specialize in delivering top-notch Electronics Manufacturing Services (EMS) tailored to your needs. From low to high-volume production, we focus on high-mix orders and offer turnkey solutions and board-level assembly. Dedicated to personalized support, we work closely with clients to meet their specific assembly and testing needs.

**CABLE & HARNESS ASSEMBLY** ..... 9

We specialize in designing, testing, and manufacturing high-quality cables and harnesses built to withstand harsh environments. From micro push-pull connectors to intricate harnesses, interconnects, and complex assemblies, our expertise ensures reliable performance in the most demanding conditions.

**ELECTROMECHANICAL ASSEMBLY** ..... 9

Our skilled final assembly team specializes in integrating PCBs into box builds, enclosures, and other components, handling projects of all complexities with precision and expertise.

2 [www.matricgroup.com](http://www.matricgroup.com)

**AFTERMARKET SERVICES** ..... 10

With unmatched experience, expertise, and cutting-edge technology, we deliver a competitive edge you can rely on. Our commitment to customer satisfaction extends well beyond product delivery—no matter the origin or purpose of your equipment. With the skills and knowledge to service it effectively, we ensure your equipment performs at its best.

**MARKETS & CERTIFICATIONS** ..... 11

We are dedicated to delivering safe, effective products that consistently meet customer performance and reliability standards. Our team is committed to continuous quality improvement, ensuring we exceed the expectations of those who depend on us.

**CAPITAL INVESTMENTS** ..... 12

We utilize state-of-the-art tools, machinery, and equipment designed to meet the demands of modern manufacturing. By leveraging the latest technologies, we deliver products that stand out as highly competitive in today's marketplace.

**FREQUENTLY ASKED QUESTIONS** ..... 13

**LET'S FIND A SOLUTION** ..... 14

Whether you need a quote or just an answer to a question, we're here to help. Let Matric Group guide you in finding the perfect solution for your next project.

2099 Hill City Road | Seneca | PA | 16346 | 814.677.0716 | 800.462.8742

# MATRIC GROUP

Matric Group is comprised of three companies. Matric Limited was established on December 6, 1971, by two electrical engineers who were previously Vo-Tech teachers. Their initial focus was designing, building, and maintaining HAM radio equipment. However, by 1973, they expanded their portfolio to develop and produce solid-state logic control and radio-controlled multiplex systems for the underground mining industry. They entered the embedded controls market in 1985, and in 1989, they invested in Surface Mount Technology equipment. Matric was acquired by the current president and CEO in 1993. He later invested in an engineering firm focusing on wind energy in 2000, renamed Windurance. In 2005, Dynamic Manufacturing was purchased as a second EMS facility.

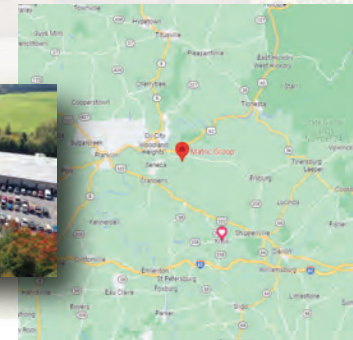
Matric Group contract manufactures electronic assemblies, offering world-class services with personalized customer support and working closely with customers to meet unique assembly and testing requirements. Matric provides engineering services, PCB assembly specializing in high mix/low to high-volume, turnkey and board level, cable and harness assembly, electromechanical assembly, and aftermarket services. As a leader in the electronics contract manufacturing industry, our proven experience and technical capabilities have helped solve customer challenges for over 50 years. We address every stage of your product development process. From design to production to aftermarket support, Matric partners with you to achieve your product's highest potential. Matric Group is certified in ISO 13485, ISO 14001, and AS 9100D quality management systems.



Founders Lee Richey and Andy Maitland stand admiring their first SMT equipment, acquired in late 1989.

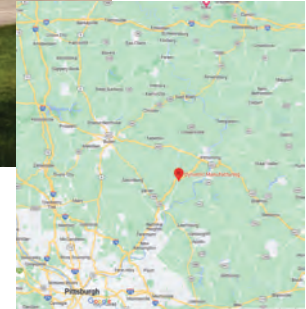


Richard E. Turner, Jr.  
President & CEO



# DYNAMIC MANUFACTURING

On January 1, 1993, three former Fisher Scientific employees formed Dynamic Manufacturing operating in a facility in Harmarville, PA. The company grew into a formidable business offering electronic manufacturing, cable assembly, and aftermarket services. In December 2005, assets of Dynamic Manufacturing were purchased by Matric Group and relocated to its current location in Freeport, PA. For over 30 years, Dynamic Manufacturing has been providing electronics contract services for various industries, from aerospace to transportation.



With two locations, our business continuity and disaster recovery plan include the following:

- Reduction and avoidance of downtime
- Resume regular services as quickly as possible
- Backup site located within 2 hours of headquarters
- Dedicated independent fiber connection
  - Cloud Office 365
  - Web via Comcast
  - ERP Application Server
  - Data Protection Manager
  - API Management
  - ECM
  - Database Servers
  - Generator Backup

# WINDURANCE

In 2000, three companies entered the wind turbine marketplace to advance blade pitch control system technologies. Each company brought credible experience in the areas of sales & marketing (within the gear and motor industry), engineering R&D (in the servo control industry), and engineering & electronic manufacturing (primarily focused on the industrial electronics and servo control industries.) In February of 2010, interests of the company were acquired by two of the original companies: Matric Group, located in Seneca, PA, and R2J Technologies, located in Pittsburgh. Renamed Windurance, they design and deliver performance-optimized wind turbine technologies for customers around the globe. At the forefront of the renewable energy industry, their vision is to distribute 35 GW of wind energy by 2035.



Engineered and developed at Windurance headquarters in Coraopolis, PA, manufactured at Matric Group in Seneca, PA



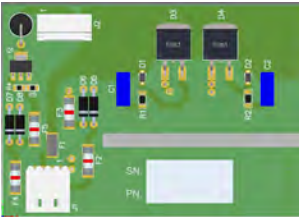
Shown above are the "Original" Servo Pitch Control, i-Pitch Control, and miniPitch Control systems. UL1741-certified power electronics are off-the-shelf, ready to use to enhance your system



# ENGINEERING SERVICES

We specialize in electronic design services to turn your concept into reality. From the first discussions to final product validation, our IPC Certified CAD Designers work closely with you every step of the way. The result? High-quality products designed and manufactured to perfection.

## PCB LAYOUT & DESIGN



### CAPABILITIES

- High-Speed Digital Designs to GHz+ on FR4 & High Performance Materials
- Low-Level Analog, RF, LVDS, GTL+, PECL
- DDR/DDR2 & 3, Memory, DVI, Ethernet, USB2, PCI, PCI

### PRIMARY SOFTWARE PLATFORMS

- Altium Nexus
- Any Netlist Format for Input
- CAM350 Pre-Fabrication Gerber Verification

### EMC/EMI & SIGNAL INTEGRITY ANALYSIS

- Termination & Topology Strategies
- Stack-Up, Impedance & Analysis

## PCB DESIGN

- Complete Traditional Printed Circuit Boards 1 to 30 Layers
- Micro-BGA, Micro-Vias, HDI, Impedance Control
- Pre-Layout Thermal Planning
- Low-Loss Materials, Metal Cores, Heat Plates

## PCB FABRICATION

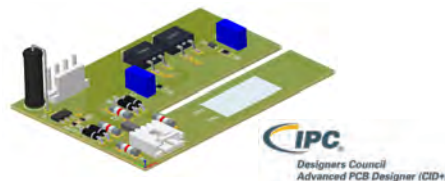
- Pre-Fabrication IPC Netlist Verification of Gerbers
- IPC Netlist Board Conformance Testing

## ASSEMBLY & PROTOTYPING

- Component Procurement
- Turnkey Assembly
- Cabling, System Board
- Interconnect

## PERMISSIBLE AREA EQUIPMENT

- Mining, Oil & Gas Applications
- Explosion Proof Designs
- Intrinsically Safe Designs



## MECHANICAL DESIGN

### AREAS OF EXPERTISE

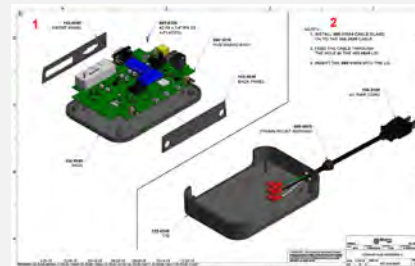
- Conceptual Designs, Proposals, Proof of Concept
- Industrial Design
- Controls & Panel Design using Silicone Keypads/Sealed
- Key Switch Technology
- Sheet Metal Enclosure Product Design
- Vendor Selection Assistance for Prototype Tooling
- Reverse Engineering
- Legacy Conversions - 2D Drawings & Modeling into 3D Formats

### PRIMARY SOFTWARE PLATFORMS

- AutoCAD Inventor
- SolidWorks

## ELECTROMECHANICAL PRODUCT DESIGN

- Conceptual Development
- Detailed Design
  - Hardware
  - Software
- Enclosure Solutions
- Engineering
- Prototyping
- Product Testing
- Manufacturing
- Computer-Aided Drafting
- General Solid Modeling
- Sheet Metal Modeling
- Detailing & Drafting
- Complex Assembly Mgmt.
- Complex Surfaces (Class A)
- Wire & Pipe Routing
- Digital Renderings





# ENGINEERING SERVICES

We provide everything you need to create a complete PCB or packaged product, from start to finish. Our engineers also specialize in real-time software design, ensuring seamless integration and performance.

## HARDWARE DESIGN

### AREAS OF EXPERTISE

- Wireless Intelligent Design/Antennas
- Extensive RF/RFID Design/Bluetooth
- 8/16/32/64 Bit uC
- High-Speed Digital
- Low-Level Analog
- Signal Conditioning
- Power Conversion
- Battery Management

### CERTIFICATIONS

- ITAR Compliant
- RoHS Compliant
- ISO | IEC 80079-34
- HUBZone Certified

### CAPABILITIES

- Project & Risk Management
- Contingency & Technology Planning
- High-Level System Architecture
- Functional & Technical Specifications
- Advanced Electronic Circuit Design
- Mechanical/Packaging Design
- Industrial Design/3D Modeling
- Rapid Prototyping
- Simulation/Analysis
- Digital/Analog/Thermal/FEA
- Build & Test System Design
- Application Development
- Prototype Development
- Assembly
- Design Validation
- Environmental Testing
  - Mechanical & Electrical
- Manufacturing Documentation
- ICT/FT & Manufacturing Management

## SOFTWARE DESIGN

### EMBEDDED SOFTWARE

- C/C++ & Assembly
- 8/16/32/64-Bit Embedded Microcontrollers - Microchip, TI, Atmel, Freescale, NXP, STM, ARM
- Embedded Microprocessors - ARM, x86, PowerPC
- Communication Devices
- Control Applications
- Instrumentation

### SOFTWARE LANGUAGES

- C, C++, C#
- Visual Studio, .NET
- Visual BASIC
- Various Assemblers

### TEST/MEASUREMENT

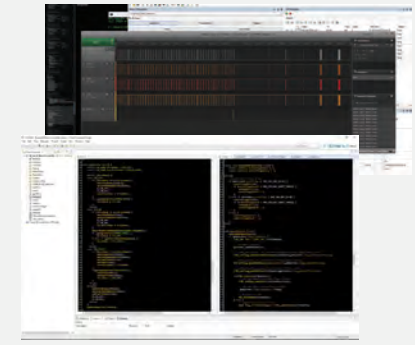
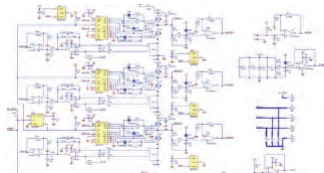
- Labview Applications
- Integrating Data Acquisition Boards & Systems
- Java Test SW

### PRIMARY SOFTWARE PLATFORM

- Test Systems
- Control Applications
- Windows Device Drivers

### PROTOCOLS

- TCP/IP & Ethernet
- USB
- MODBUS, CAN
- Bluetooth, WiFi, Zigbee
- CAN
- CANopen





# PCB ASSEMBLY

We specialize in handling low-to-high volume, intricate assemblies that others find challenging. With fully equipped SMT lines, advanced semi-automatic THT equipment, and a skilled hand assembly team, we are committed to enhancing your efficiency and boosting your bottom line.

## SMT ASSEMBLY

### CAPABILITIES

- SMT Experience since 1989
- IPC Certified Lead-Free Processes & Equipment
- BGA & MicroBGA (Ball Grid Array)
- Smallest Component Placement
  - 03015 (0.3x0.15 mm)
  - 0201 (0.024x0.012 in.)

## THROUGH-HOLE ASSEMBLY

### CAPABILITIES

- IPC Certified Hand Soldering
- Precision Component Lead Forming
- Selective Solder Equipment

### CERTIFICATIONS

- ISO 13485:2016 - Medical
- ISO 14001:2015 - Environmental
- AS9100D - Aerospace
- NADCAP - Electronics - PBA
- ITAR Compliant
- RoHS Compliant
- ISO | IEC 80079-34
- IPC 610 & 620; IPC-JSTD-001
- US | Canada JCP
- HUBZone Certified

## INSPECTION & TESTING

- Automated Optical Inspection (AOI)
- Solder Paste Inspection (SPI)
- X-Ray Inspection
- Visual Inspection
- In-Circuit Testing (ICT)
- Flying Probe Testing
- Functional Testing
- Burn-In Testing
- Component Inspection
- Component Value Check
- DFT (Design for Testability)
- High Voltage Testing
- HIPOT Testing
- IC Burning
- Impedance Testing
- Soak Testing
- Thermal Aging Testing



## PCB PANEL & COMPONENT SPECIFICATIONS

### BOARD TYPE

- Flexible
- Rigid
- Rigid-Flexible
- Hybrid
- Rogers
- Ceramic

### ASSEMBLY TYPE

- Mixed
- Surface Mount Technology (SMT)
- Through-Hole Technology (THT)

### MAXIMUM BOARD SIZE

- 20"x20"

### BOARD SIZE

- Standard
- Irregular

### MIN/MAX COMPONENT SIZE

- MT size 03015, 0201 or greater

### STENCILS

- Frameless up to 29"x29"

### COATING

- Urethane
- Acrylic

### BOARD FINISHES

- Lead
- Lead-Free HASL
- ENIG

### FINE PITCH

- .4mm

### BGA PITCH

- .2mm

### SOLDERING TYPE

- Hand
- Lead-Free (RoHS)
- Wave
- Reflow
- Robotic
- Selective
- Tin-Lead

### FILE FORMAT

- Ascii CAD
- CAD
- DXF
- Gerber
- ODB++
- Orcad

### ORDER TYPE

- Prototypes
- Production

### PACKAGE TYPE

BGA, BGS, BTC, CBGA, CCGA, CCM, CGA, CLCC, COF, CSP, CSPs, DFN, DIP, DSBGA, DSP, FFPGA, SOIC, FPGA, IC, LCC, LCCs, LGA, LIDS, MBGA, MELF, Micro-BGA, MLF, MSOPs, Odd Form, PBGA, PLCC, POP, PQFN, QCG, QEP, QFN, QFP, QPF, QPN, SOD, SOIC, SOJ, SON, SOP, SOT, SSOP, TBGA, TOFP, TSOP, TSSOP, VFBGA, VGA, WLCSOP, XFP



# CABLE & ELECTROMECHANICAL ASSEMBLY

Partner with us for your cable assembly and box build needs. With a blend of expertise, experience, and exceptional service, we deliver solutions you can trust. Specializing in harsh-environment cables and harnesses, we design, test, and manufacture high-quality assemblies tailored to your requirements. From micro push-pull connectors to complex interconnects and harnesses, our products are built for reliability and precision. Serving industries such as mining, medical, and instrumentation, we provide durable, dependable cables designed to perform in the toughest conditions.

## CABLE & HARNESS ASSEMBLY

### CAPABILITIES

- Custom Cable
- Harsh Environment Cable
- Custom Cable & Wire Harnesses
- Custom Overmolding
- Panel/Box Wiring
- Mechanical
- Build to IPC | WHMA-A-620
- Custom Mold Design
- Variety of Modular Molds in Stock
- PVC, Polypropylene, Neoprene, & Santoprene



### SPECIALTY TOOLS & EQUIPMENT

- Injection Mold Machine
- Programmable Cutter/Stripper
- Semi-Automated Crimper
- Over 250 Crimping Tools
- Continuity & HIPOT Testing
- Automated Cable Testing
- Positioners & Die Sets
- Insertion & Extraction Tools
- Vulcanizing Transfer Press



## ELECTROMECHANICAL ASSEMBLY

### CAPABILITIES

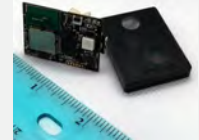
- Box Build
- Final Assembly
- Custom Packaging
- Encapsulation Capability
- Intrinsically Safe Assembly
- Explosion Proof Assembly

### INSPECTION & TESTING

- Shock & Vibration
- Thermal Cycling
- Late Stage Customization

### SPECIALTY TOOLS & EQUIPMENT

- Functional Testing
- Potting
- Heat Shrinking
- 3-Ton Crane
- Multiple RF Cages





# AFTERMARKET SERVICES

Our dedication to customer satisfaction goes far beyond product delivery. We provide upgrades, calibration, and repair services to ensure your products continue to operate at their best. Our support extends to products manufactured elsewhere and legacy equipment requiring sustaining engineering. From rugged mining equipment built to endure extreme conditions to life-critical medical devices and cutting-edge robotics, our electronics deliver the reliability you need. With our services, you can trust your products to perform flawlessly when it matters most.

## BOARDS, MODULES, & SYSTEMS

### SERVICES OFFERED

- Clean, Inspect & Test
- Troubleshoot & Repair
  - RF
  - High Voltage
  - Electromechanical
  - Cable
  - System Rebuilds
- Field Service
- Recalibrate
- Recondition
- Refurbish
- Remanufacture
- Revision Update of Software/Hardware
  - Service History Data
  - Failure Analysis Reports
  - Product Lifecycle Management (PLCM) Opportunities

### CERTIFICATIONS

- ISO 13485:2016 - Medical
- ISO 14001:2015 - Environmental
- AS9100D - Aerospace
- NADCAP - Electronics - PBA
- ITAR Compliant
- RoHS Compliant
- IECEx IEC 60079-19
- IPC 610 & 620; IPC-JSTD-001
- US | Canada JCP
- HUBZone Certified



**BEFORE**



**AFTER**

### PRODUCTS SERVICED

- Industrial Cabling
- RF Handhelds & Base Stations
- Single-Board Computers
- Distributed Control Systems
- Displays & HDMI Devices
- Underground Mining Electronics
- Proprietary Consumer Electronics

### SPECIALTY TOOLS & EQUIPMENT

- High-Pressure Spray Washer
- Low-Temperature Drying Oven
- Conformal Coating
- Sandblasting & Microblasting
- Cleaning Equipment & Supplies

## PRODUCT LIFE CYCLE STAGES



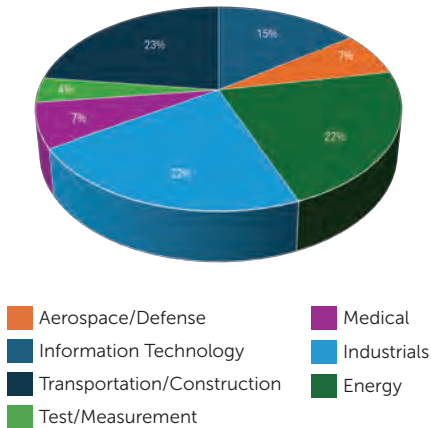
## PLCM BENEFITS

- Reduce Waste
- Excellent Turn-Around Time
- Upgrades Software & Hardware
- Sustainability
- Warranty
- Cost-Savings
- Customer Satisfaction

# MARKETS & CERTIFICATIONS

We have supported Original Equipment Manufacturers in various fields, including power generation, rail and transport, and robotics, as well as the markets listed in the graph below. Matric Group consistently researches and applies for relevant certifications, which helps to improve our overall performance and enhance our product quality and reliability. Certifications standardize our processes internally and equalize us with competing contract manufacturers. Each certification we achieve drives continual improvement.

## MARKETS SERVED



## MATRIC LIMITED CERTIFICATIONS



IECEx IEC 60079-19 | ISO | IEC 80079-34 | US|CANADA Joint Certification Program

## DYNAMIC MANUFACTURING CERTIFICATIONS



The **QUALITY** of our electronics isn't just critical to our success, but crucial to all those who use them. In some cases, it could be the difference between life and death. **RELIABILITY** is a necessity for our customers; that's why Matric has **PROVEN** quality systems to help support you and your products.



Safety is #1 at Matric Group. Our safety committee meets monthly and performs safety checks throughout all facilities.

# CAPITAL INVESTMENTS

In electronics contract manufacturing, continuous investment in technology is essential. Automation technologies play a pivotal role in enhancing production efficiency, reducing waste, and improving product quality. At Matric Group, we are committed to staying at the forefront of innovation by consistently upgrading our machinery and technologies to meet the evolving needs of our customers. These advancements not only ensure the delivery of high-quality, reliable electronic products but also prioritize the safety of our workforce. By embracing cutting-edge technology, Matric maintains its competitive edge while upholding the highest standards of quality and safety. For a detailed list of our equipment or to learn more, reach out to us at [solutions@matric.com](mailto:solutions@matric.com).

## EQUIPMENT

### SURFACE MOUNT TECHNOLOGY (SMT)

- Panasonic NPM-W2 Placement Systems
- Mycronic MY300DX17 Placement Systems
- Koh Young Solder Paste Inspection Machines
- Koh Young Pre & Post AOI Machines
- ERSA 10 Zone Nitrogen Reflow Ovens
- Heller 10 Zone Reflow Ovens
- Ekra Screen Printers
- Kolb Batch Cleaner
- Nordson Dage X-Ray Counter

### THROUGH-HOLE TECHNOLOGY (THT)

- Contact Semi-Automated Insertion Machines
- ERSA Selective Soldering Systems
- Koh Young THT AOI Machines
- Robotic Soldering System
- LPKF Laser Depaneler
- Asys PCB Router
- Automated Dispensing System

### INSPECTION & TESTING

- Acculogic Flying Probe Testing
- Yxlon X-Ray Inspection
- Keysight In-Circuit Tester (ICT)

### CONFORMAL COATING

- PVA Automated Coating Systems
  - Spray Booth
- Nordson Plasma Cleaner

### STORAGE UNITS

- Kardex Vertical Lift Humidity Controlled Component Storage Systems
- JUKI Humidity Controlled Component Storage Systems for SMD Components

### CABLES & HARNESSES

- Mold Injection System
- Programmable Coax Cable Stripper
- Programmable Wire Stripper
- Programmable Stripper & Crimper
- Programmable Cutter & Stripper
- HIPOT Testing



# FREQUENTLY ASKED QUESTIONS

## COMPANY

- Q. Does Matric get involved at the product conception, design, testing, prototype, manufacturing or repair stages?
- A. Matric has the expertise to step in and add value at any point of a product's lifecycle.
- Q. How long has Matric been in business?
- A. December 6, 2021 marked our 50th year in business.
- Q. Is Matric privately held?
- A. Yes. Matric is family-owned and operated.



## ENGINEERING SERVICES

- Q. What type of CAD tools does Matric utilize for mechanical and electrical design and documentation?
- A. Matric uses Inventor and Solidworks for mechanical designs and predominantly Altium for electrical designs.
- Q. Does Matric model their designs completely to avoid interference and aid in enclosure/mold issues?
- A. Matric models PCBs down to the component level and imports them for mechanical design and clearance checks.
- Q. Does Matric contract design product for new development phases or provide DfX input and lifecycle analysis?
- A. Matric is often involved with manufacturing the product and supporting lifecycle issues; DfX concepts are relevant.

## ASSEMBLY SERVICES

- Q. What are Matric's core competencies?
- A. Engineering, PCB Assembly, Electromechanical Assembly, Cable & Harness Assembly, and Aftermarket Services.
- Q. What is Matric's standard lead-time?
- A. Two to three weeks from receipt of materials.
- Q. How long does it take to receive a quote?
- A. One week. But it depends on how complicated the assembly. If you need a quick quote we can accommodate.
- Q. Does Matric have a Disaster Recovery Plan?
- A. Yes. Matric has two facilities located in Northwestern Pennsylvania within 70 miles of each other.

## AFTERMARKET SERVICES

- Q. Do you repair products not manufactured by Matric?
- A. Yes, we do, and if drawings are not available, we can provide reverse engineering services.
- Q. How long does it take to repair a product?
- A. Our typical turnaround on Matric manufactured products is ten business days after materials are received.
- Q. Do you record and keep service history data?
- A. Yes we do. We photograph, log the service history, create failure analysis reports, provide serial numbers and revisions, and offer Product Lifecycle Management Opportunities. LCM

# LET'S FIND A SOLUTION

From engineering and production to full product lifecycle management, Matric Group is your trusted partner. Simply share your product drawings, BOM, and required quantities, and we'll deliver a tailored quote. With over 50 years of expertise and cutting-edge capabilities, we've been solving complex challenges for businesses like yours. Reach out today to discover how we can support your success.

## FULL DOCUMENT PACKET

- Indented Bill of Material w/Revision, Manufacturer, Manufacturer Part Numbers, Quantities, & Reference Designators
- xls, .csv, or .txt File Formats
- Assembly Drawings
- Fab Drawings
- Gerber Files
- Approved Custom Item Supplier(s), if applicable. (This could be the PCB, transformers, metal work, etc.)
- Programming information, if applicable
- Test Requirements, if applicable
- Pick & Place Files, if available
- Sample, if available

## SPECIAL PROCESSES REQUIRED

- RoHS Compliance
- Conformal Coating
- Functional Testing
- In-Circuit Testing

## ADDITIONAL INFO REQUIRED

- Quotation Quantity
- EAU
- Standard Delivery/Quick Turn Delivery
- Full Company Name & Address
- Contact Name
- Technical Contact
- IPC Class (1, 2, or 3)
- ITAR/EAR Assembly
- Lot Tracking
- Other Customer/Special Requirements



With over 350 associates between our two EMS locations, our blend of size, experience, and industry knowledge continuously delivers quality products. **At Matric Group, it's not just the electronics; it's the people you can count on.**

# 1.800.462.8742

## COMMUNITY COMMITMENT





[www.matricgroup.com](http://www.matricgroup.com) | 2099 Hill City Road | Seneca | PA | 16346 | 800.462.8742 | [solutions@matricgroup.com](mailto:solutions@matricgroup.com)